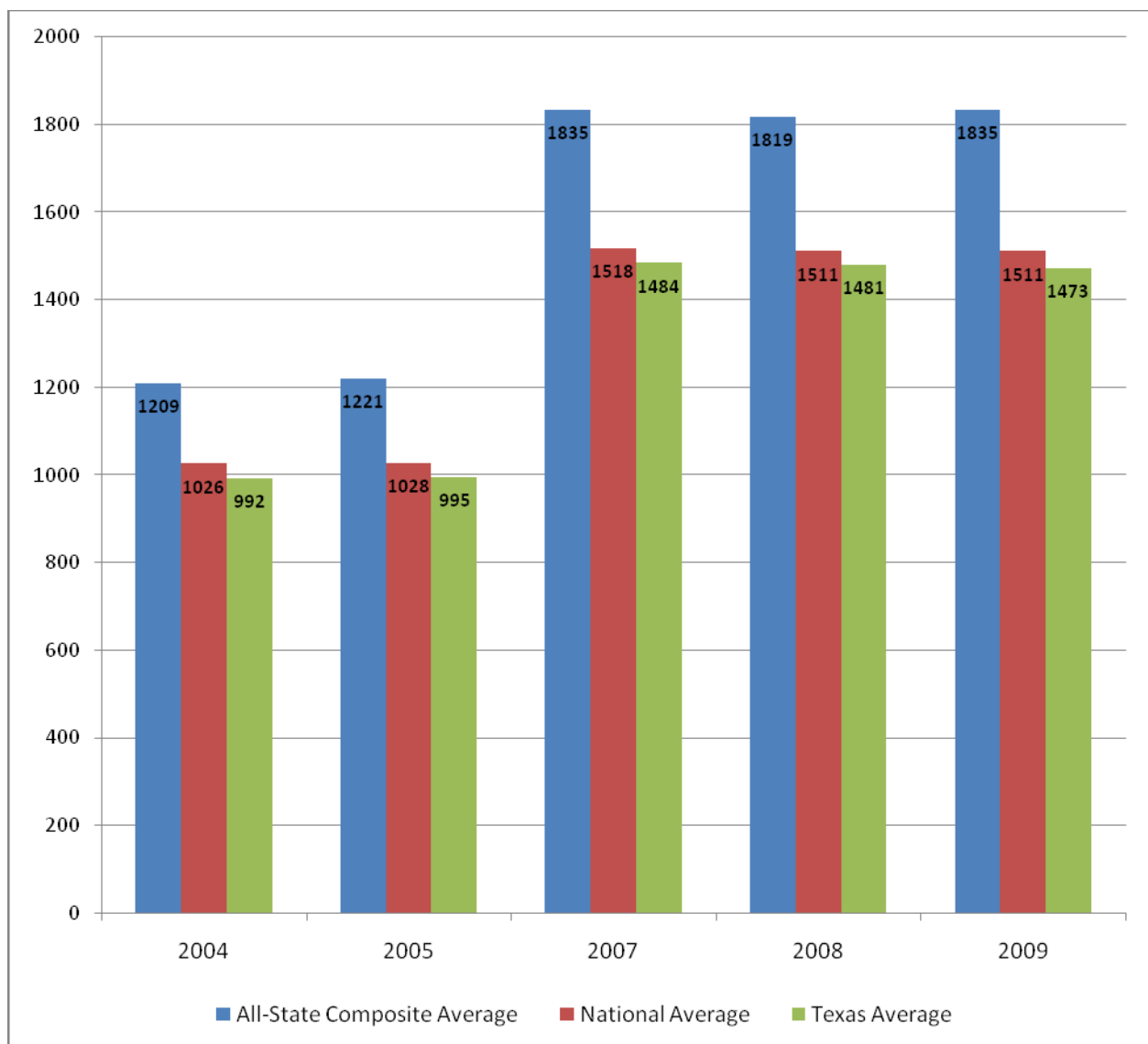


Five-Year SAT Score Comparison

Texas All-State Musicians Compared to the National and State Average

Texas All-State musicians have consistently scored about 20% higher than the national average and about 22% higher than the Texas average.

**2006 Averages were not available for comparison*

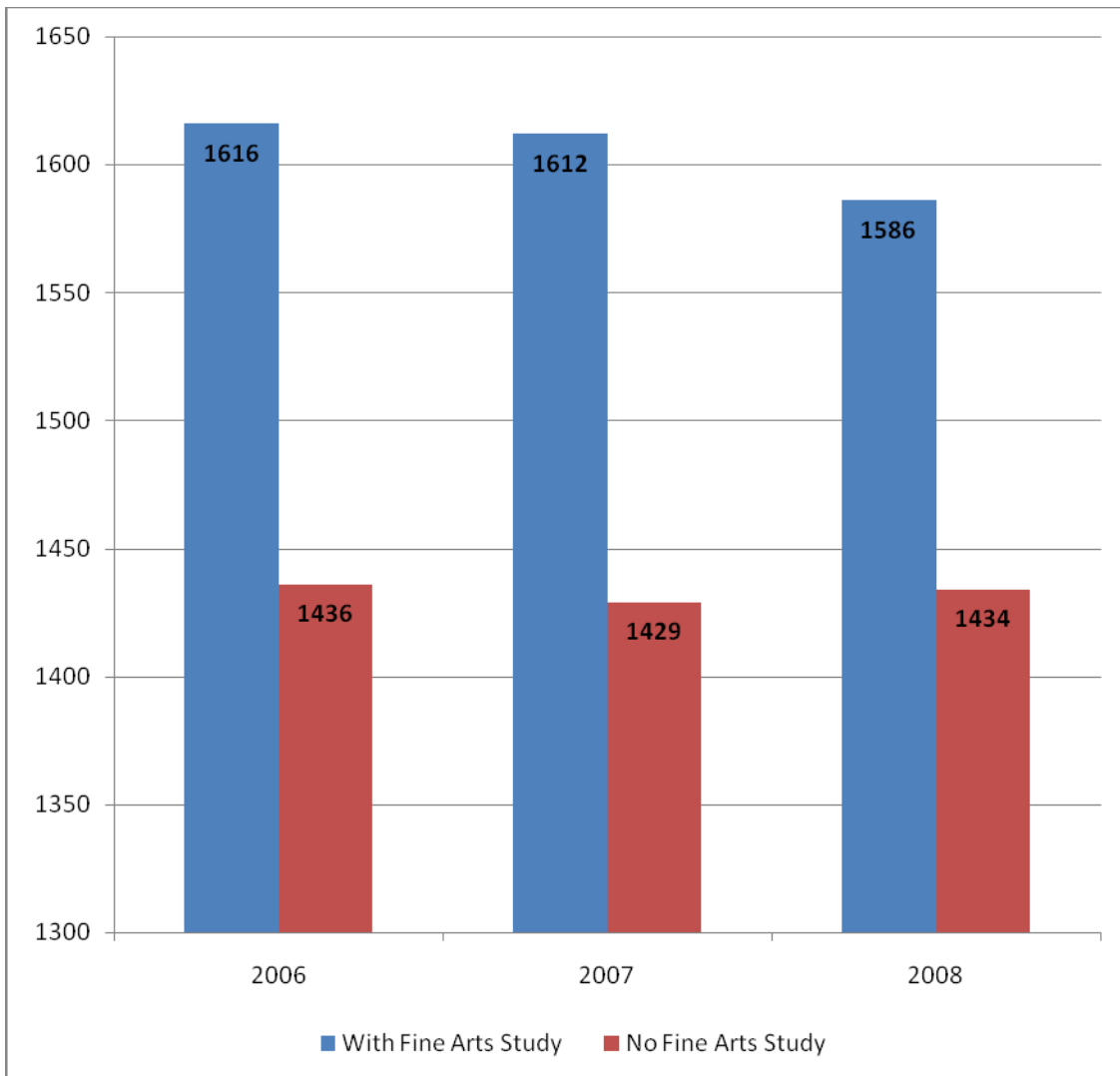


Texas Music Educators Association

7900 Centre Park Drive, Austin, TX, 78754 • (888) 318-TMEA • www.tmea.org

Students Enrolled in Fine Arts Courses Score Higher on the SAT than those with no Fine Arts Coursework

Students of the arts continue to outperform their non-arts peers on the SAT, according to reports by the College Entrance Examination Board. Data from the College Board, Profile of College-Bound Seniors National Reports from 2006, 2007, and 2008 show that students enrolled in fine arts courses score from 11 to 13% higher than students not enrolled in any fine arts courses.



Educating Through the Arts:

How Fine Arts TEKS Correlate to TAKS Objectives

933 direct correlations

Fine Arts TEKS to TAKS connections from K-12

397 direct correlations: Elementary TAKS to Fine Arts TEKS

222 direct correlations: Middle School TAKS to Fine Arts TEKS

314 direct correlations: High School TAKS to Fine Arts TEKS

358 correlations of **Theater Arts TEKS*** to the TAKS** objectives.

94 direct correlations of **Dance TEKS** to the TAKS objectives.

359 direct correlations of **Music TEKS** to the TAKS objectives.

213 direct correlations of **Art TEKS** to the TAKS objectives.

TEKS to TAKS correlation study conducted by the Center for Educator Development in Fine Arts (2006)

*TEKS—Texas Essential Knowledge and Skills (State Standards)

**TAKS—Texas Assessment of Knowledge and Skills (Statewide Student Performance Assessment)

Fine Arts Education: What the Law Says

Fine Arts holds its most prominent placement in law and State Board rule that it has enjoyed in recent years. Fine Arts is defined in State Board rule as music, art, theatre and dance.

Mission and Objectives

Objective 4 of the Texas Education Code (TEC) states: A well-balanced and appropriate curriculum will be provided to all students. Chapter 28 of the TEC states, “Each district shall ensure that all children in the district participate actively in a balanced curriculum designed to meet individual needs.”

Required Curriculum

All the courses in the Required Curriculum, which includes Fine Arts, are necessary for a child to receive a well-balanced, meaningful education. The word “Required” in the TEC means that “each school district that offers kindergarten through grade 12 shall offer this curriculum.”

Texas Essential Knowledge & Skills

The State Board of Education will identify the Texas Essential Knowledge and Skills (TEKS) for all subjects of the Required Curriculum. The TEKS define what students should know and be able to do in each academic subject area and each grade level. TEKS are currently in place for all Fine Arts disciplines. As a condition of accreditation, the State Board of Education requires school districts to offer instruction based on the TEKS at appropriate grade levels.

Foundation Courses

English language arts, math, science, and social studies are called Foundation courses because the TEC’s academic objectives identify these courses as the foundation of a well-balanced and appropriate education. These subjects will continue to be assessed on the state level.

Enrichment Courses

Fine Arts courses are a part of the Enrichment Curriculum, a component of the Required Curriculum. By definition, enrich means “to make richer, to add greater value or significance.” It does not mean “extra,” “not necessary,” “elective,” or “optional.”

These courses are an integral part of the educational process and in many cases are the courses that give meaning and substance to a child’s education and to his or her life. By law, school districts, as a condition of accreditation, must utilize the TEKS in delivering instruction in all subjects of the Required Curriculum - not just in Foundation courses.

Graduation Requirements

Under state board rule, the Recommended Program (the current default graduation plan) and the Distinguished Achievement Program require one credit of Fine Arts for graduation. Fine Arts is defined as an “academic core component” in each of these plans.

Elementary Requirements

State Board rule (19 Texas Administrative Code, Chapter 74, subchapter A) now mandates that school districts provide TEKS-based instruction in all subjects/courses of the Required Curriculum in grades K-5. This requirement includes music, art and theatre at each of these grade levels. School districts may deliver this instruction in a variety of arrangements and settings.

Middle School Requirements

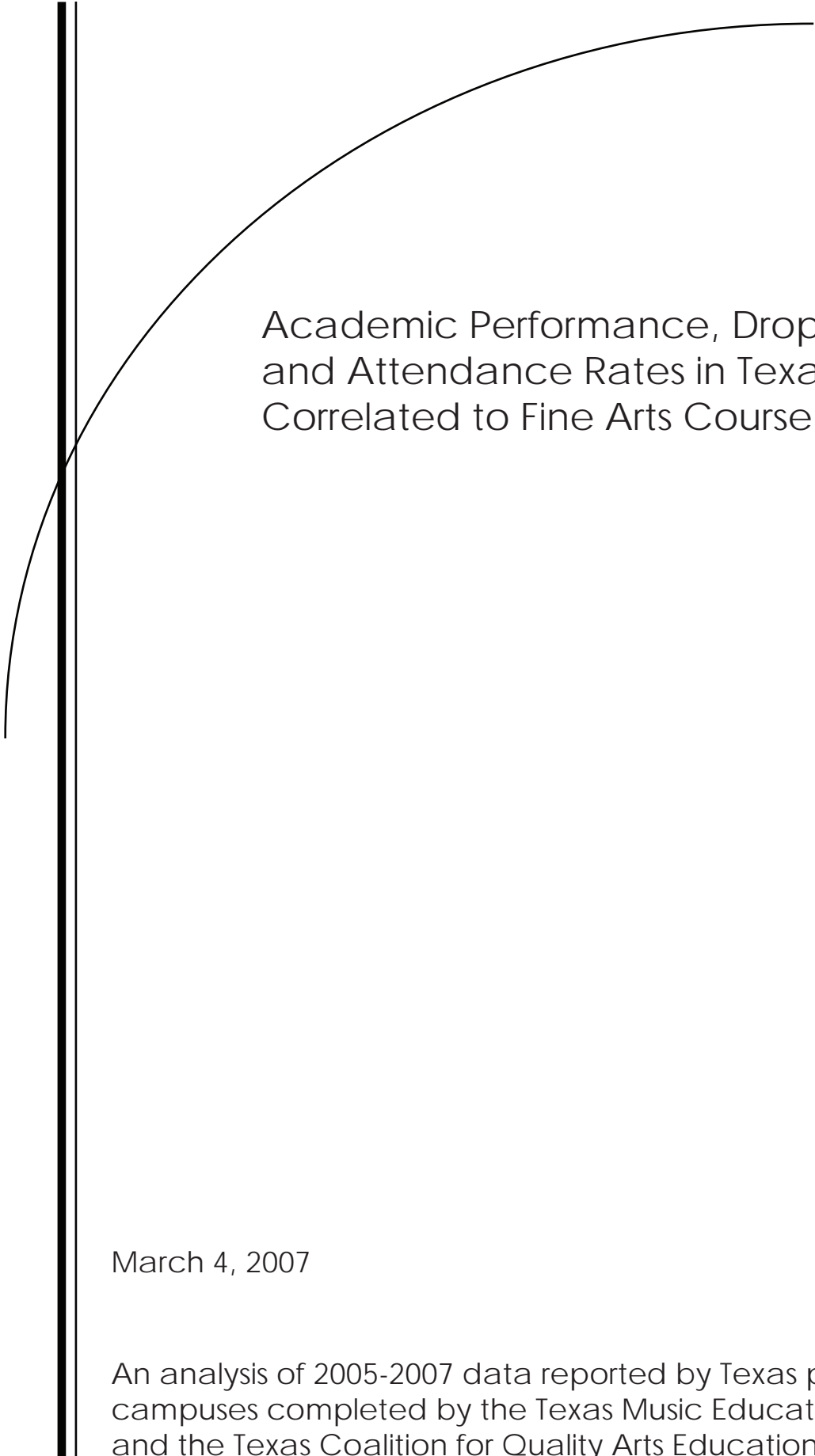
Middle schools must offer art, music, and/or theatre in grades 6, 7, and/or 8.

High School Requirements

High schools must offer at least two of the four state-approved fine arts subjects (art, dance, music, theatre).

No Child Left Behind

Though not a part of Texas law, the federal legislation, No Child Left Behind, includes Fine Arts as a part of the academic core curriculum.



Academic Performance, Drop Out Rates
and Attendance Rates in Texas Public Schools
Correlated to Fine Arts Course Enrollment

March 4, 2007

An analysis of 2005-2007 data reported by Texas public school
campuses completed by the Texas Music Educators Association
and the Texas Coalition for Quality Arts Education

Academic Performance, Drop Out Rates and Attendance Rates in Texas Public Schools Correlated to Fine Arts Course Enrollment

An analysis 2005-2007 data reported by Texas public school campuses completed by the Texas Music Educators Association and the Texas Coalition for Quality Arts Education

Purpose

Research continues to demonstrate a correlation between the study of fine arts and overall academic achievement—from brain research showing that the same type of cognitive abilities are used in mathematics and fine arts to studies revealing that SAT scores of students who participate in fine arts courses are higher than non-participants. Data from the College Board, Profile of College-Bound Seniors National Report from 2001, 2002, 2004 and 2005 shows that students enrolled in fine arts courses score from 6% to 11% higher than students not enrolled in any fine arts courses. Additionally, since 2000, Texas All-State musicians have scored about 18% higher than the national average and about 22% higher than the Texas average

To further explore this relationship of fine arts participation to academic achievement in Texas schools, the Texas Coalition for Quality Arts Education, together with Texas Music Educators Association (a TCQAE participating organization) analyzed academic achievement ratings, drop out rates and fine arts enrollment data reported by public schools across Texas.

Overall Conclusions

After analyzing the data on campus academic ratings, attendance rates, drop out rates and fine arts course enrollment, the following overall conclusions were reached:

Academic Rating: campuses with a higher percentage of student enrollment in fine arts courses achieved higher academic ratings.

Student Drop out: campuses with a higher percentage of student enrollment in fine arts courses report lower drop out rates.

Student Attendance: campuses with a higher percentage of student enrollment in fine arts courses reported higher attendance rates.

Analysis Method

The analysis included data from all “Regular Instructional” campuses for the entire state. Data from high school (grades 9-12) and middle school (grades 6-8) campuses was included in this study. County-District-Campus codes were used to match the data mined from the analysis data sources: campus ratings, total student enrollments, total student enrollments in Fine Arts, drop out rates and attendance rates. The data used in this study

is maintained by TEA on its website: Texas Education Agency Website
(www.tea.state.tx.us/) → Data Resources & Research (www.tea.state.tx.us/data.html) →
askTED (Texas Education Directory) <http://askted.tea.state.tx.us/> .
The following data was included:

Fine Arts Enrollment Data (requested data):
Grades 6 – 8 (enrolled [2006-2007]) and Levels I – IV (completion [2005-2006])
- Music, Art, Theater, Dance

2006 Accountability Rating System
Ratings by District
Ratings by Campus

Secondary School Completion and Dropouts in Texas Public Schools
2005 Attendance rates
2005 Drop out rates (7-8 and 7-12)

The analysis consisted of determining the percentage of students at each campus enrolled in fine arts courses and calculating that average for the campuses assigned each academic ranking. This same analysis was completed for campuses within a specified drop out range.

Data Analysis Summary

The following is the summary-level data that supports the overall conclusions in this analysis.

Campus academic rating compared to average fine arts enrollment

The following demonstrates that campuses with higher academic ranking have a higher percentage of students enrolled in fine arts courses.

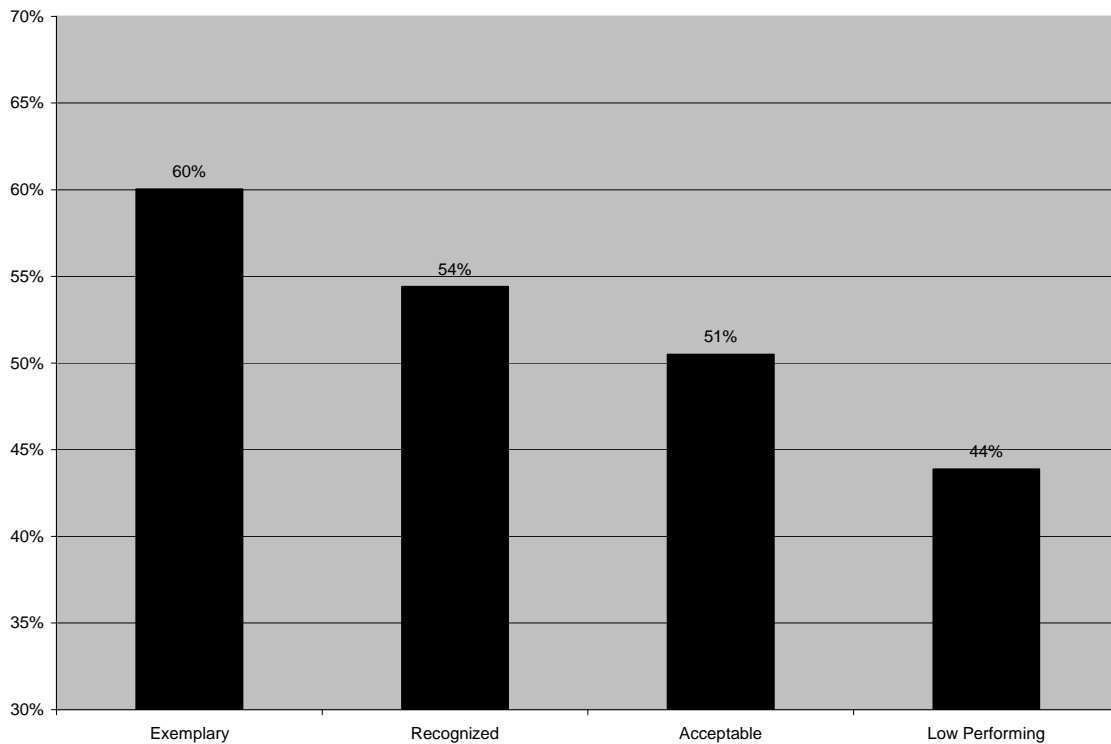
9-12 Campuses

RATING	Number of Campuses	Fine Arts Average Enrollment
Exemplary	8	60.04%
Recognized	123	54.41%
Acceptable	713	50.50%
Low Performing	107	43.88%

6-8 Campuses

RATING	Number of Campuses	Fine Arts Average Enrollment
Exemplary	24	72.63%
Recognized	307	70.19%
Acceptable	481	66.97%
Low Performing	52	66.02%

Fine Arts Course Enrollment in Texas High Schools by Campus Academic Rating:



Campus drop out rates compared to average fine arts enrollment

The following demonstrates that campuses with lower drop out rates have a higher percentage of students enrolled in fine arts courses.

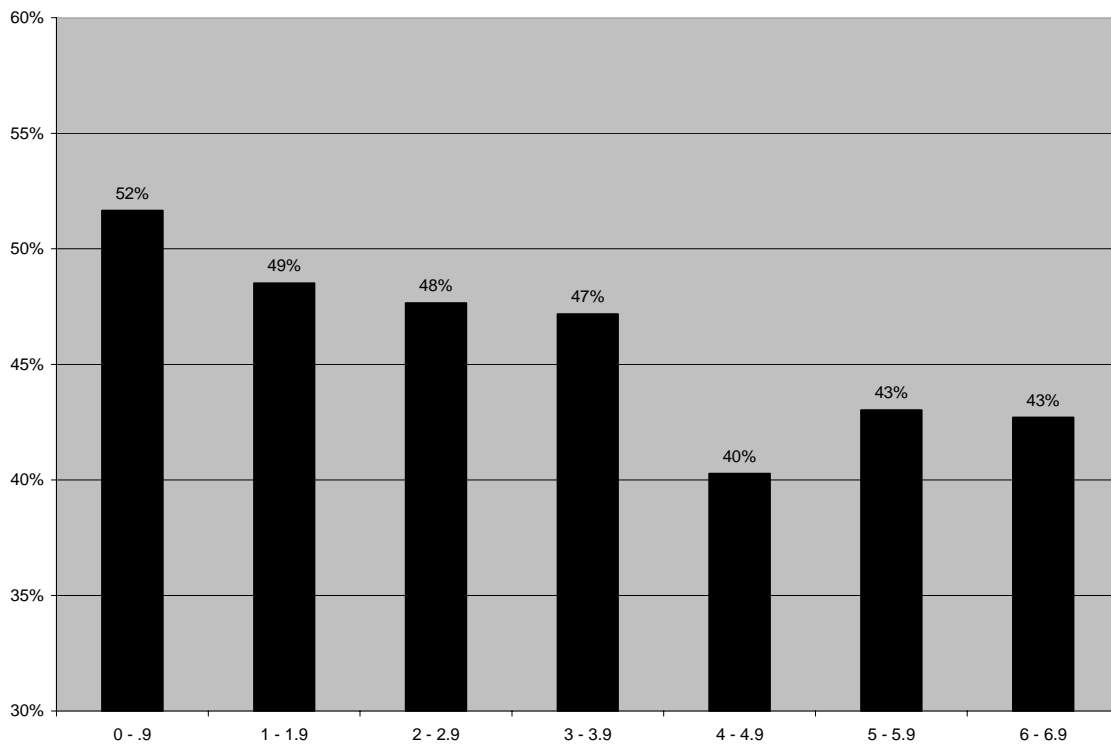
9-12 CAMPUSES

Drop out Rate	Number of Campuses	Fine Arts Avg Enrollment
0 - .9	617	51.66%
1 - 1.9	207	48.52%
2 - 2.9	77	47.65%
3 - 3.9	30	47.18%
4 - 4.9	19	40.28%
5 - 5.9	4	43.03%
6 - 6.9	4	42.70%

6-8 CAMPUSES

Drop out Rate	Number of Campuses	Fine Arts Avg Enrollment
0 - .9	836	67.58%
1 - 1.9	18	60.29%

Fine Arts Course Enrollment and Drop Out Rates in Texas High Schools



Student attendance compared to average fine arts enrollment

The following demonstrates that campuses with higher attendance rates also have a higher percentage of students enrolled in fine arts courses:

9-12 CAMPUSES

Attendance Rate	Number of Campuses	Fine Arts Avg Enrollment
98 th Percentile	6	51.02%*
97 th	40	52.59%
96 th	150	54.44%
95 th	254	50.54%
94 th	249	50.45%
93 rd	117	48.40%
92 nd	59	46.80%
91 st	29	48.91%
90 th	20	44.43%
89 th	8	40.29%

**Trend exception based on a single-campus anomaly*

6 - 8 CAMPUSES

Attendance Rate	Number of Campuses	Fine Arts Avg Enrollment
98 th	6	63.77%*
97 th	97	74.94%
96 th	364	70.49%
95 th	261	66.20%
94 th	95	60.60%
93 rd	16	54.33%
92 nd	25	59.10%

**Trend exception based on a single-campus anomaly*